

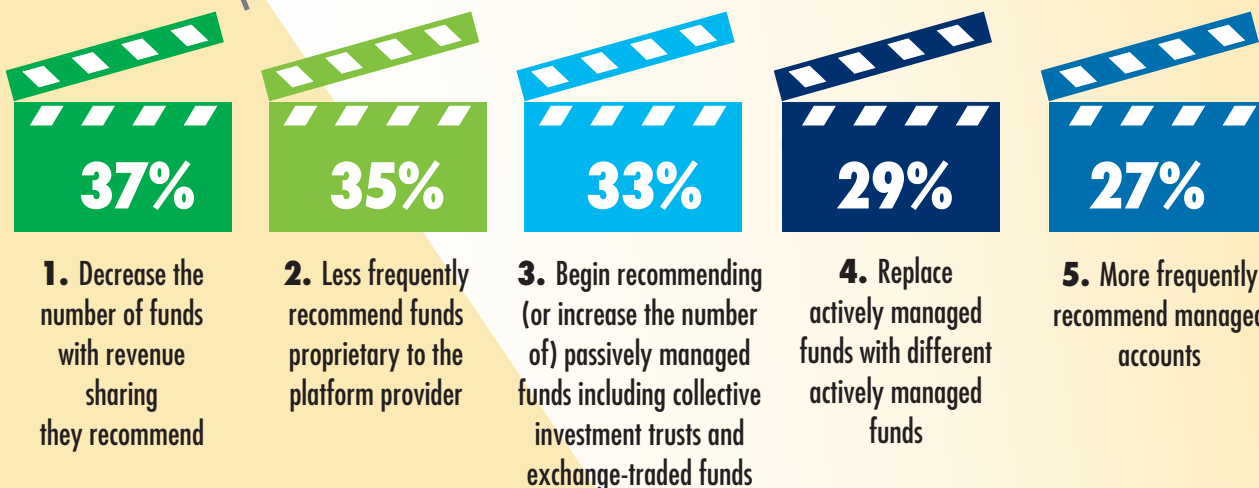
The Actors' Guild: Responses to the DOL Fiduciary Rule

Rule uncertainties are prompting a wide range of actions and planned responses.



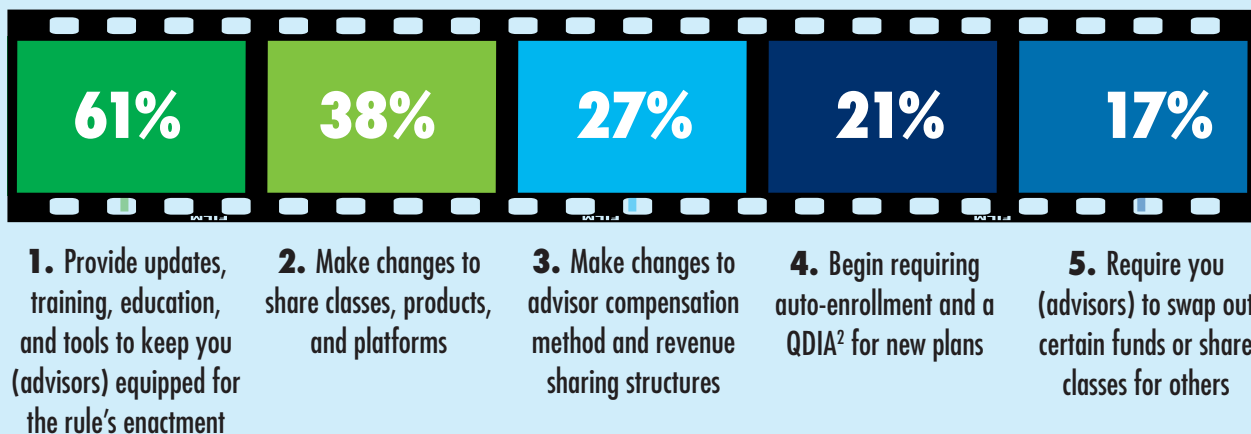
LIGHTS, CAMERA, ACTION

The top 5 actions¹ **advisors** expect to take



THAT'S A "TAKE!"

The top 5 actions taken by **broker/dealers**:







(continued on back)

¹ Twenty-seven percent of respondents report "take no action."

² Qualified Default Investment Alternative

BONUS MATERIAL

Responses to “As a result of the new DOL fiduciary rule, do you expect to increase or decrease the ... funds you recommend?”

Funds	Passively Managed	Actively Managed	Proprietary
INCREASE	+35%	+14%	+7%
DECREASE	-10%	-23%	-35%
NET CHANGE	+25%	-9%	-28%
			

METHODOLOGY

2017 phone-based survey of 100 advisors and consultants who have, within the past year, assisted plan sponsor clients with selecting an investment platform, manager, recordkeeper, and/or funds for their Defined Contribution plan.

